

# Technical Information

## Honeywell Center's Ford Theater



Prepared in accordance with USITT  
Standard technical package guidelines  
Updated July 2017

## Table of Contents

	<u>Page</u>
General Information (contacts, emergency & medical info)	3
Restaurants, Hotels, Laundry, Handicap Access	4
Directions, Parking, Load-In Area	5-6
Management (production room, staff, policies)	7
Carpentry (seating, dimensions, deck, soft goods, line set, support)	8-9
Lighting (power, dimmers, control, positions, inventory)	10
Sound (power, wiring, monitor/communications inventory)	11-12
Film, Video, & Projection	13
Properties (pit, chairs, stands, pianos, orch. shell, platforms)	14
Wardrobe (dressing rooms, quick change rooms, inventory)	14
Appendix A: Line Set Schedule	15
Appendix B: Radio Frequencies in Use	16
Appendix C: Theater Plans & Section	17-21
Appendix D: Light Plots	22-23

## General Information

### Contact Information:

Mail & Street Address: 275 West Market St., Wabash, IN 46992

Phone Number: (260) 563-1102

Fax: (260) 563-0873

Web: [www.honeywellcenter.org](http://www.honeywellcenter.org)

Tod Minnich

President/CEO

Business: 260.274.1401

[tminnich@honeywellfoundation.org](mailto:tminnich@honeywellfoundation.org)

Stephanie Rogers

Guest Services Supervisor

Business: 260.274.1423

[srogers@honeywellfoundation.org](mailto:srogers@honeywellfoundation.org)

Jay Morris

Technical Director

Business: 260.274.1415

[jmorris@honeywellfoundation.org](mailto:jmorris@honeywellfoundation.org)

Afla Irani

Vice President of Hospitality

Business: 260.274.1419

[airani@honeywellfoundation.org](mailto:airani@honeywellfoundation.org)

Emergency Number: 911

### Non-Emergency Numbers:

Fire Department: (260) 563-1166

1000 N. Wabash St. Wabash

Police Department: (260) 563-1111

1190 Manchester Ave. Wabash

Wabash County Hospital (260) 563-3131

710 N. East Wabash, Wabash

### Health/Medical:

Hospital:

Parkview Wabash Hospital

710 N East St

(260) 563-3131

Clinic:

FirstCare- Walk in

1655 N. Cass St

(260) 274-0387

Dentist:

Mary Bain, DDS

278 Manchester Ave.

(260) 563-4065

OB/GYN:

Heartland Ob/GYN

807 N Cass St

(260) 563-3300

Optometrist:

Midwest Eye Consultants

1143 N Cass St

(260) 563-3672

Chiropractor:

Wabash Chiropractic Center

508 N Wabash St

(260) 563-8746

Sports & Physical Therapy:

Keith Lancaster

1310 Manchester Ave

(260) 563-5630

Pharmacy:

CVS

486 N Cass St

(260) 563-6941

Walgreens

487 N. Cass St.

(260) 563-3138

Health Clubs:

YMCA

500 S Cass St

(260) 563-9622

<http://wabashcountyyymca.org/>

**1 block away\***

### General:

Grocery:

Kroger

1309 N Cass St

(260) 563-6871

Walmart

1601 N. Cass St

(260) 563-5536

US Post Office

111 W Main St

(800) 275-8777

FedEx & UPS Authorized Outlet:

Sunshine Pack & Ship

1351 N Cass St

(260) 563-8797

**Eugenia's\*\***  
***In building***  
(260) 563-1102  
11-2 M-F, Su  
[Website](#)

**Twenty\***  
111 W. Market St  
(260) 563-0111  
Open until 9 or 10  
[Website](#)

**Market Street Grill\***  
90 W. Market St  
(260) 563-7779  
Open until 10:30pm  
[Website](#)

**Modoc's\***  
205 S Miami  
(260) 569-1281  
Open until 9pm  
[Website](#)

**Goodfella's Pizza**  
1118 Stitt Street  
(260) 569-1162  
Open until 9 or 10  
[Website](#)

**Pizza King\***  
46 W Canal St.  
(260) 563-7417  
Open until 10pm  
[Website](#)

**Una Bella Pizza**  
1710 S Wabash  
(260) 563-7333  
Open until 9pm  
[Yelp w/ menu](#)

**Harvey Hinklemeyers**  
1605 N Cass St  
(260) 274-2811  
Open until 10pm  
Pizza and sandwiches

**Habenero Grill**  
700 South Cass St  
(260) 563-7722  
Open until 9pm  
Mexican  
[Website](#)

**New Asian Buffet**  
1367 N Cass St  
(260) 274-1349  
Open until 9:30pm  
Chinese  
[Website](#)

## Restaurants:

\*Restaurant within walking distance of the Honeywell Center.

**\*\*Advance arrangements can be made for in-house catering. Eugenia's is the exclusive caterer for the Honeywell Center and no outside catering is allowed in the building.**

North Cass Street (State Road 15) also has the usual assortment of fast food & delivery establishments including Arby's, Burger King, Culver's, Hardee's, KFC, Long John Silvers, McDonalds, Papa Johns, Pizza Hut, Subway, Taco Bell, Dairy Queen, and Wendy's.

## Ground Transportation:

Taxi service is not currently available in the Wabash area; however advance arrangements may be made for ground transportation.

## Hotels:

Charley Creek Inn  
(260) 563-0111  
111 W Market St  
1 block east of the theatre  
<http://www.charleycreekinn.com/>

Holiday Inn Express  
(260) 569-1189  
1131 North Cass  
approx. 2 miles north from theatre  
[Website](#)

Knight's Inn  
(800) 626-7103  
1950 S State Road 15  
approx. 3 miles south from theatre  
[Website](#)

## Laundry:

Laundromat:  
Quick Clean  
1050 N Cass St  
(260) 563-9217

Dry Cleaners:  
Wabash Poly Clean  
1019 N Miami St  
(260) 563-8131

## Visiting Wabash:

Wabash Marketplace  
[Website](#)

Wabash County Tourism  
[Website](#)

## Time Zone:

The Honeywell Center is located in the **Eastern Time Zone**.

## Area Code:

260

## Zip Code:

46992

**Handicapped Access:** The Ford Theatre has 8 readily useable wheelchair locations. Handicap accessible rest rooms are available on the south side of the theatre lobby and mezzanine as well as in all the lower level dressing rooms. Handicap accessible shower facilities available in the lower level dressing rooms 1, 2, 4, and 5. Hearing assistance system is available.

## Parking

One tour related vehicle will be allowed to park on our loading dock as long as it does not impede access to the fire department access door, which is located about half way down the dock. Parking for other tour related vehicles will be on Canal Street, which runs along the south side of the building, adjacent to the loading dock. Please inform the staff as to how many and what types of vehicles are traveling with the production. We will then reserve sufficient space in advance.

**Shore Power:** 2 x 120/208 V 3 phase, 100 A/leg, tie in for tails located immediately inside loading dock door. Both disconnects are wired with a 50A NEMA 14-50R receptacle.

## Directions

### **From the North:**

State Road 15: continue south on 15 into town, turn right (west) on Market which is the first stop light after the railroad track. The center is on the left side.\*

State Road 13: continue south on 13 into town, turn right (west) on Market which is the first stop light after the railroad track. The center is 2.5 blocks west on the left side.\*

### **From the South:**

State Roads 15 and 13: State Roads 15 and 13 come into town on S. Wabash street.

Turn left (west) on Market St., which is State Road 15, and is the second stop light after you cross the Wabash River. The Center is 2.5 blocks west on the left side.\*

### **From the West:**

Highway 24: stay on 24 to State Road 15. Turn right (south) on State Road 15.

Take State Road 15 to Market Street, which is the first stoplight after you cross the railroad tracks. Turn right on Market Street. The Center is on the left.\*

### **From the East:**

Highway 24: stay on 24 to State Road 13. Turn left on 13 south into town. Turn right (west) on Market Street, which is the first stoplight after the railroad tracks.

The Center is 2.5 blocks west on the left side.\*

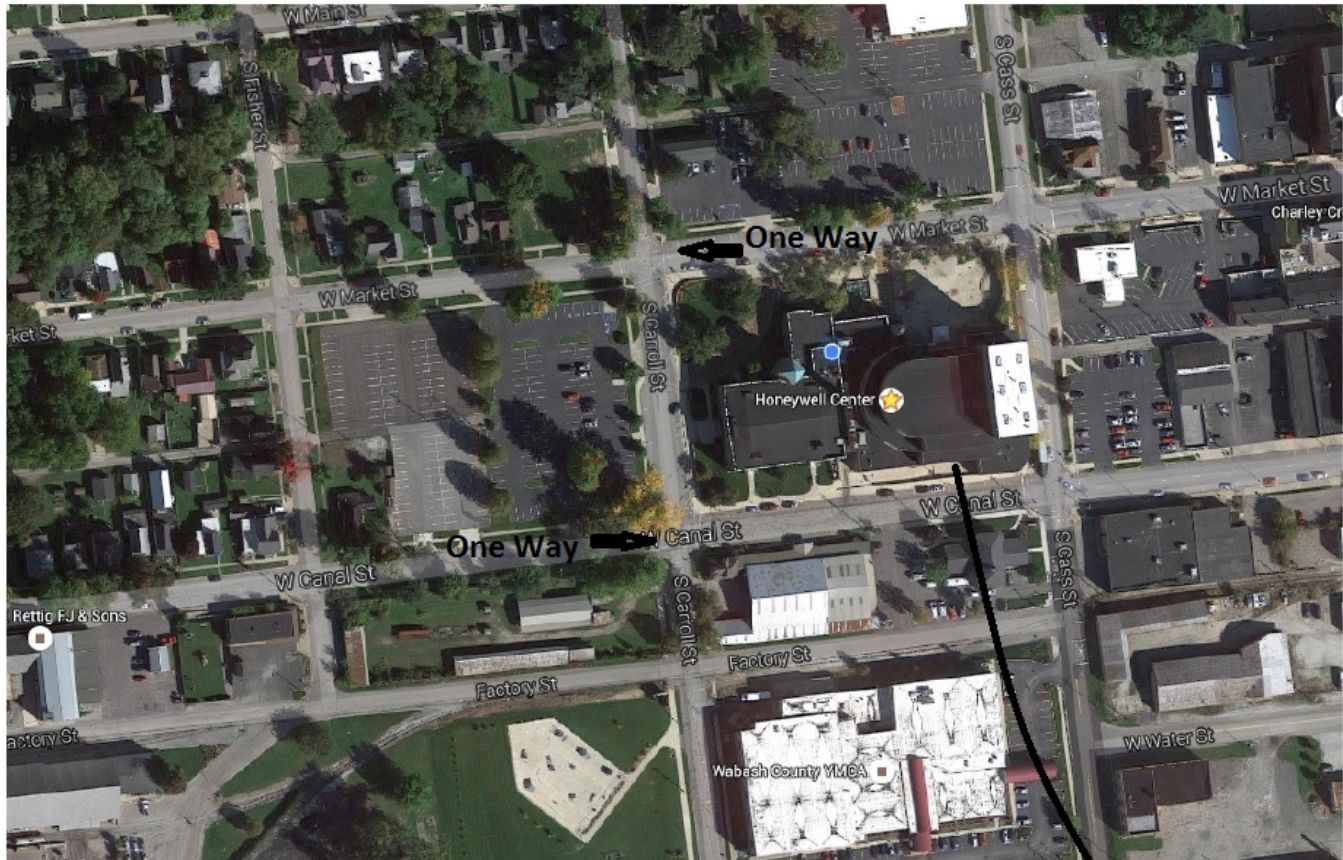
**\*Please Note:** All routes end in westward travel on Market Street. Please turn left at the intersection immediately following the Center. This is Carroll Street. The next street that you will encounter is a one way street heading east. This is Canal Street, which is the street on which our loading dock is located.

IN ORDER TO BACK A TRAILER INTO THE DOCK, YOU MUST BE FACING THE WRONG DIRECTION ON CANAL STREET. You may wish to turn right at the intersection of Carroll and Canal, AGAINST the one-way, and back towards the dock. Please feel free to ask the Honeywell crew for traffic assistance if needed.



## Load-In Area

**Dimensions:** The loading surface of the dock is 47" (1.2m) high, 15' 9" (4.8m) wide. One truck can be accommodated at a time. The loading dock door is 8' w x 12' h and opens into Sub Assembly (50' x 25'). From Sub Assembly to the stage is an unobstructed roll with a height and width limitations set by two fire doors, both of which measure 14'x14' (4.2m x 4.2m).



We can accommodate 1 semi in the dock, 3 busses next to the retaining wall and 2 semis on the SW corner of Canal St.

Loading Dock  
Semis must go the WRONG way down Canal St. to back up into the loading dock.

## Management

**Production Room:** Green room usually serves as the production office. Reasonable volume printing and copy service is available through the technical director's office. We are also able to FAX from the finance office. Please ask the TD for assistance.

**Phone Lines:** There are a total of 6 phone lines available for production use. Digital phone access points are located in the green room, both star dressing rooms, lower level dressing room hallway, and the lighting booth. One analog phone line is available in the green room. All phone lines are restricted to local or toll free calling. Calling cards must be used for long distance. To access an outside line dial "9." Direct dial in is not available on the digital phones, and must be arranged in advance for the analog phone line. Please ask the Technical Director for phones in advance if needed.

**Internet Access:** A wireless network (Wi-Fi) exists throughout the building. SSID = HoneywellFalcon. Please see Technical Director for password. Network jacks are located in the green room and light booth for a hardwired connection.

**Green Room:** 16' x 34' (4.8m x 10.3m) located on stage level off stage left adjacent to the upper level star dressing rooms. A TV with local channels, DVD player and stage feed is located in the green room.

**Stage Managers Console:** Backstage paging & video monitors are available SR & SL.

**Theatre Staff:** Paid local staff. Full time Technical Director and Assistant Technical Director. Experienced crew heads. Please notify the T.D. in advance if the production requires riggers. The theater is non-union.

**Handicapped Access:** Elevator available to lower dressing rooms. A wheelchair ramp available from lower level to orchestra pit. Handicapped rest rooms are available in the lower level dressing rooms 1, 2, and 4.

## Policies:

Preferred house open time is 45 minutes prior to curtain. It is understood that individual production needs may preclude this possibility. Only in extreme circumstances (safety concerns, etc.) will the house be postponed beyond 30 minutes to curtain. We will typically run preshow slides and have an offstage or recorded house announcement unless it conflicts with the show.

Alcohol will not be provided by the Honeywell Foundation.

The Honeywell Center is a smoke free environment.

Pyrotechnics and unusual rigging practices must be approved by the local fire officials and the Technical Director prior to the performance. Please notify the Technical Director in advance. The Technical Director reserves the right to limit or eliminate practices which are thought to pose a risk to the safety of the crew, performers, or patrons.

## Carpentry

**Seating:** Main Floor: 1041 Balcony: 399 Orchestra Lift: 54  
Typical setup with Orchestra seats: 1484, Without: 1430

Total: 1502

### **Stage Dimensions:**

**Proscenium:** 50' wide by 30' high (15.24m x 9.14m) by 45' (13.7m) deep from the plaster line. Plaster line to the front lip of the stage is 6' (1.8m). The orchestra pit extends the apron to 18' (5.5m) from the plaster line.

**Wing Space:** Stage left 30' (9.1m) full height and width except for 6' (1.8m) from stage left wall, which is height obstructed by side gallery at 30' (9.1m). Stage right 25' (7.9m) full width and height.

**Grid height:** 77' (23.5m) from deck to top of grid steel.

**Orchestra Pit:** Pit is a trapezoid which is 35' (7.6m) wide on the stage edge and 53' (16.1m) wide on the house edge with a depth of 12' (3.6m). Pit is hydraulically operated, continuously variable, and capable of supporting 58,000 lb. Control locations on pit lift and in the orchestra pit area under the stage apron.

**Stage height:** 3' 6" (1.1m) above the house floor.

**Stage Floor:** Southern Yellow Pine stained mahogany. Nailing to the deck is prohibited. Lag screws and other fasteners will not be permitted unless they play a direct role in the safety of the production and no other method is available. Please contact the Technical Director in advance to discuss other options.

### **House Draperies (Soft Goods):**

**House Curtain:** Maroon velour traveler/guillotine combination 4'6" (1.4m) upstage of the plaster line. 50% fullness. (Note; due to the upstage position of the house curtain, the teaser is often used instead.)

**Teaser:** is identical velour-guillotine only at 1'2" (0.4m) from the plaster line). All rigging is manual.

**Legs:** 1 set of (tormentors) 50% fullness maroon velour. 32'H x 11" W (9.75m x 3.35m)  
6 sets 0% fullness black velour. 4 panels 36' H x 8'W (10.97m x 2.43m)

**Borders:** 1 (teaser/act) 50% fullness maroon velour. 3 panels 32' H x 19' W  
(9.75m x 5.79m).

2 at 0% fullness black velour each have 5 panels 36'H x 16'W (10.97m x 4.87m).

3 at 0% fullness black velour each have 5 panels 18'H x 16'W (5.48m x 4.87m).

**Full Stage:** 2 intermediate traveler drapes each have 2 panels 36'H x 32'W  
(10.97m x 9.75m).

**Scrims:** 1 sharktooth white 35'H x 60'W (10.67m x 18.29m).

1 sharktooth black 30'H x 60'W (10.67m x 18.29m).

**Cyclorama:** 1 filled scrim white 30'H x 60'W (10.67m x 18.29m).

### **Rigging:**

**Line schedule:** See attachment

**Working height of battens:** High trim on all battens except electrics is 75' (22.8m)

High trim on electrics is 43' (13.1m)

Low trim on all battens is 3' (.9m)

**Battens:** 47 at 63' (19.2m) 1 ½" pipe, 6 lift lines.

4 electric sets and 4 traveler sets at 63' (19.2m) double 1½" pipes, 6 lift lines.

3 side ladder sets at 12' (3.65m) six 1½" pipes, 4 lift lines (two each side).

All 1 ½" pipe is schedule 40.



## Carpentry (continued)

**Type:** All sets manually operated single purchase T-track.

**Arbor capacity:** Maximum load is 1500 lb. per set.

**Available weight:** Ample weight is available (iron).

**Loading gallery:** Stage right, 66' (20.1m) above the stage deck.

**Pin Rail:** Stage right and left, 30' (9.14m) above the stage deck.

**FOH rigging:** 2 points at center, 1 point at 10', 20' and 25' from center. 1 ton beam clamps. 25' is used for line array. See TD if you need line array taken down.

4 Stagemaker SM10 1 ton motors in house, 2 used for line array.

**\*\*Gridiron is non weight bearing. All rigging must be done from the beams.\*\***

**\*\* We do not allow loft blocks to be moved or kicked\*\***

### **Support Areas:**

**Crossover:** Permanent crossover behind upstage wall 6' (1.8m) wide.

**Access:** From the front of house located off stage left. Two small dressing rooms and green room are also located off stage left. Remaining dressing rooms off stage left and down one floor.

**Shop area:** The Ford Theatre does not have a shop of its own. There is a carpentry shop in the building. Please ask the staff for assistance.

**Storage:** Production related storage is located in Sub-Assembly and under the stage. One truck can be left in the loading dock for additional storage. Please notify the staff of unusual storage concerns.

**Personnel Lift:** A Genie AWP 36 foot lift is available for production use.

### **Special Effects:**

**Hazer:** Ultratec Radiance Water Based Hazer (DMX or manual control)

**Foggers:** Antari ICE-101 Low Fog Machine (DMX or manual control)

Antari M-5 Stage Fogger (DMX or manual control)

## Lighting

**Power:** 2 x 120/208 V 3 phase, 400 A/leg, Lex PowerGate Company Switches upstage left.  
1 x 120/208 V 3 phase, 100 A/leg, Lex PowerGate Company Switch midstage left. (Audio)

**Dimmers:** 384 Colortran D192 2.4 kW with 12 spares.

**DMX:** (2) Universes of DMX available stage left, in the lighting booth, and row L house right.

**Control:** ETC Ion  
ETC SmartFade 1296

**House lights:** Controlled from console or from stations stage left, lighting booth, and various house positions.

**Circuits:** Dimmer per circuit. Four on-stage electrics (34 circuits each). Three house catwalks (first has 30 circuits, second (best FOH pos.) 50 circuits, third 30 circuits). The balcony rail has 12 circuits. Drop boxes are available on-stage from the grid and side galleries with 56 circuits, 18 circuits on-stage and in side stage rooms. The orchestra pit has 10 circuits. The theatre has 43 dispersed non-dims.

**Front of house transfer:** upstage left, stage pin connectors

**Front of house positions:** 1<sup>st</sup> catwalk, 31' (10.2m) at 85°  
2<sup>nd</sup> catwalk, 56' (17.1m) at 45°  
Note: 2<sup>nd</sup> catwalk obstructs lighting upstage from the 3<sup>rd</sup> catwalk  
3<sup>rd</sup> catwalk, from center of position to DS center is 92' (28m) at 35°  
Balcony rail, 99' (30.2m) at 25°  
Box booms, range from 37' (11.3m) to 48' (14.6m) at 25° to 45°

### **Equipment Inventory:**

Colortran ERS 1kW FEL: (23) 10°, (33) 12°, (45) 20°, (27) 30°, (14) 40°,  
ETC Source4 ERS: (2) 10°, (30) 14°, (4) 19°, (4) 26°, (10) 36°  
ETC Source4 Lens Tubes: (3) 5°, (7) 36°  
Colortran Fresnel: (30) 8"  
Altman Fresnel: (8) 8"  
ETC Source4 PAR: (14)  
PAR 64 1 kW: (130)  
Colortran Striplights: (10) 6', 4 circuit {12x250w}  
Scoops: (2) Focusable Floods 1 kW  
Colortran Far Cyc: (10) 4 circuit 1 kW  
Forerunner Color Scrollers (12) w/1 psu

**Followspots:** (3) 2kW Strong Xenon Super Trouper

**Hardware:** (6) iris units for Colortran ERS (2) iris units for Source4 ERS, (35) pattern holders for Colortran ERS (15) pattern holders for Source4 ERS, (6) 8" top hats, (4) 6" top hats, (6) 8" barn doors, (6) 6" barn doors, (8) 12'; (6) 16' (4.88m); (4) 20' (6.09m) dance booms.

**Cable:** Approximately 1000' in 8'(27), 12'(13), 24'(12) and 50'(7) 12 gauge SO cable terminated in Harj locking stage pin connectors. (77) two-fers and limited adapters (3 pin-edison).

**Gel:** Roscolux is our preferred media. Some Lee, Apollo, and GAM is available.  
We can also special order gel, please give us at least 3 working days notice.

## Sound

**Power:** 1 x 120/208 V 3 phase, 100 A/leg, Lex PowerGate Company Switch midstage left.  
100A Motion Labs Power Distro with 50' of #2 Feeder

**Control Location:** The sound booth is at the rear of the house. The in-house mix position is immediately in front of the booth, slightly left of center. The in-house mix position is 10'W x 9'D (3.0m x 2.7m). 170' of snake is required to reach from a monitor rig down stage right to the center of the in-house mix position. 180' of snake is required if the monitor rig is down stage left.

**Hearing Assist System:** A Listen Technologies LT-800 Stationary FM broadcasting transmitter is present and transmitting at a frequency of 72.9MHz. (12) Listen Technologies LR-400 receivers are available for use by the patrons.

**Monitor/Paging System:** Dressing rooms, Green room and backstage hallways paging is available. This system is fed a signal from the sound console for program monitoring. Individual attenuators are present in all locations.

**Production Communication System:** A Clear Com MS-222 two channel main station with an ample supply of belt packs, single and dual muff headsets available. Telephone handsets available.  
A Telex BTR-700 wireless intercom system with 4 belt packs is also available.

**FOH Console:** Yamaha M7CL-48 Digital Mixing Console (Firmware Version 3.56)  
Yamaha PW800W Power Supply  
Apogee Big Ben Word Clock

**Monitor Console:** None available in house

**Playback/Recording:** Denon DNC635 CD Player  
Pro Co iRack Interface  
Sony CD/MD Combo deck

**Signal Processing:** (1) Lake LM26 (Front Fill and Building Feed Processor)  
(1) Rane DA216s  
(2) Klark Teknik DN360 (Monitor EQ)  
(1) dbx iEQ31 (Monitor EQ)

**Amplifiers:** Mains: (6) Lab Gruppen PLM1000Q w/ Lake Processing  
(1) Lab Gruppen PLM2000Q w/ Lake Processing (Subwoofers)  
Front Fill: (1) Lab Gruppen FP3400  
Balcony Fill: (1) Crown CDi1000  
Monitors: (1) Crown Macro-tech 1200 (Sidefills)  
(3) Crown XTi 1000 (Biamped with XTi 4000)  
(3) Crown XTi 4000 (Biamped with XTi 1000)  
(1) Altec Lansing 9444B/SA 300w per channel @ 4 ohms  
(1) Crown XTi 1002 500w per channel @ 4 ohms

**Speakers:** Mains: (18) JBL Vertec 4888 Line Array Elements

	(8) EAW SB1000zR Subwoofers
Front Fill:	(4) JBL Vertec 4886 Compact Line Array Elements
Balcony Fill:	(2) Renkus-Heinz Trap JR/9

## Sound (continued)

Monitors:	(2) Renkus-Heinz Trap JR/9 (Side Fill)
	(2) Renkus-Heinz CE-3T (Side Fill)
	(8) JBL VRX915M 1.5" x 15" floor wedge
	(2) JBL PRX618S-XLF (Drum Subs)
	(2) Crate SLH 1" x 12" floor wedge
	(2) Galaxy Hot Spot

<b>Microphones:</b>	AKG D-12E (1)	Shure Beta 57A (4)
	AKG C-1000S (2)	Shure Beta 91A (1)
	AKG C-3000 (2)	Shure Beta 98 (4)
	AT 853 Rx (6)	Shure MX418/C (1)
	Beyer M-88 TG (1)	Shure SM-57 (6)
	Beyer M 101 (4)	Shure SM-58 (14)
	Helpinstill 120 Piano Sensor (1)	Shure SM-63 (4)
	Sennheiser MD-421 (3)	Shure SM-81 (2)
	Sennheiser MD-431 (4)	Shure SM-90A (2)
	Shure Beta 52 (1)	Shure SM-91A (4)

<b>Direct Boxes:</b>	Countryman Type 95 DI (6)
	Radial Engineering J48 (5)
	Whirlwind PCDI (1)

<b>Wireless Microphones:</b>	Shure ULXP4-J1 Receivers (4)
	Shure ULX2-J1 Beta58 Handhelds (4)
	Shure ULX1-J1 Belt Packs (4)
	Countryman E6 Headset (2)
	Countryman B3 Lavalier (2)
	Shure WL93 Lavalier (2)

**Installed Wiring:** Junction boxes just off proscenium opening down stage right and left provide access to 32 XLR microphone lines and 8 XLR returns each in addition to 4 Neutrik Speakon connectors. The orchestra pit contains a junction box with 16 XLR microphone lines and 4 Neutriks. Limited microphone positions are also available on the catwalks and in floor pockets on the stage and pit. ALL AUDIO LINES COME TO A PATCH POINT AT SOME POINT. These points are located in patch bays; one in the sound booth and one down stage right.

<b>Snake System:</b>	Main Snake:	Whirlwind 48 x 8, 200' W4 Fan-out
	Split:	Whirlwind 48 x 8, 30' W4 Fan-out
	Sub Snakes:	ProCo 50', 8 Channel (Fan to Box)
		Whirlwind 75', 12 Channel Mini Medusa (Fan to Box)
		Whirlwind 50', 12 Channel Mini Medusa (Fan to Box)
	Whirlwind 75', 6 Channel Mini Medusa (Fan to Box)	

**Cable:** (10) 10' XLR; (28) 25' XLR; (18) 50' XLR, (4) 4' NL4; (5) 25' NL4; (4) 50' NL4; (4) 75' NL4

**Microphone Stands:** (8) Atlas Tripod Boom Stands, (22) Atlas round base stands, (6) Atlas round base short boom stands, (22) AKG boom arms, (5) Desktop stands

### Film, Video and Projection

**Closed Circuit Camera System:** A Canon VC-C50iR camera is fed to TV monitors located backstage, Green Room, Star Dressing rooms, and Technical Director's office. This system is used for live feed only and is not setup for recording.

**Video Projection System:**

(1) Da-Lite Dual Vision Surface Fast Folding Video Projection Screen 10'6" x 14'0"

(1) Sanyo PLC-XT35 5,000 ANSI Lumens LCD Projector (Max Resolution: 1600x1200) Currently Lens Set to 4x3 Aspect Ratio

**Video Control and Playback:**

(1) Kramer VP436 ProScale™ Presentation Digital Scaler/Switcher

(1) Tascam DVD01U DVD Player with preview monitor

(1) HP Computer with PowerPoint 2010

(1) Extron VGA Extender

(1) Kramer 2x1 VGA Switcher Box

**Location:**

All Video Playback Equipment is located in the Control Booth. Computers may be connected directly to the Projection System from the Control Booth or the Stage using the Extron VGA Extender.



## Properties

**Music:** Chairs: (74) Wenger musician series, black

(6) 30" backless stools

Stands: (60) Wenger music stands

(1) Conductors stand

Lights: (60) Universal clip lights

Conductors Podium: podium top is 3' x 3' and is 1' high (0.9m x 0.9m x 0.3m). There are 9.25" wide (0.23m) stair treads located on opposite sides of platform at a height of 6"(0.15m)

**Pianos:** (1) 9' Steinway Model D Concert Grand

(1) 6'1" Yamaha C3 Baby Grand

(1) 5'3" Yamaha GH1 Disclavier Baby Grand

(2) Baldwin Acrosonic spinet

**Orchestra shell:** The Ford Theatre is equipped with a Wenger orchestra shell consisting of seven towers and three flown acoustical panels. The shell encompasses a trapezoid 50' wide (15.24m) at the downstage end (proscenium width) and tapering to 36' wide (10.97m) at its back wall, 25' (7.62m) upstage of the proscenium arch. The overall height of the shell is 24'6" (7.46m). Three general purpose battens are used for the flown panel. Unavoidably, many of the battens are obscured or hindered when the shell is in place. Adequate lighting positions are available.

**Platforms:** (20) 4' x 8' platforms (1.21m x 2.44m) available with legs at 8" (0.20m) intervals starting at 8" (0.20m) and terminating at a maximum platform height of 48" (1.21m). Legs are stocked in sufficient numbers to provide support for (8) 8", (8) 16", (14) 24", (8) 32", (5) 40", (3) 48".

Please contact the staff for additional staging needs or questions.

**Choral Risers:** (6) Wenger 6' Tour master 3-step risers. (Capacity 12-16 per riser)

**Dance Floor:** Black Marley (approx. 57' W x 31' D")

**Lecterns:** (3) Golden oak full standing lecterns available as well as (2) table mounted versions.

**Tables:** Various table sizes are available

## Wardrobe

**Dressing rooms:** (2) Star dressing rooms off stage left on stage level

(2) Large chorus rooms off stage left down 1 level from stage

(3) Cast dressing rooms off stage left down 1 level from stage

Note: All dressing rooms contain mirrors, make-up lights, sinks, showers and toilets.

**Wardrobe area:** None specifically delineated- under stage area or dressing rooms used

**Irons/Ironing boards:** (2) Boards and consumer irons available

**Steamers:** (2) Jiffy J2-2M Steamers

**Washer/Dryer:** (1) Set available for production use (These are also used by cleaning staff at night)

**Racks/Hangers:** (2) 6' rolling racks

(2) 8' portable racks (not on wheels, but may be moved)

Note: Dressing rooms contain limited costume storage

**Quick Change Areas:** The theatre has side stage rooms located down stage right and left outside of the proscenium arch. Semi-permanent work light has been installed. Portable privacy panels are also available

Line #	Name	Weight (lbs.)	Notes	Dimensions	Height	From Center	From Proscenium
2	Fire Curtain	1,080					1'-0"
3	Teaser (red)	350					1'-7"
4	Torm Legs	220		32'H x 11'W	In	Adjustable	2'-2"
5	Video Screen	50					2'-9"
6							3'-7"
7	Side Ladder						3'-11"
8	Main Drape (Red Traveller)	1,055					4'-6"
9	Border	225		18'H x 63'W			5'-1"
10	Legs	140	2 panels per side- 8'W	36'H x 16'W	In	21' L/R	5'-7"
12	1st Electric (cir. 161-194)		Maximum Out Trim 36'9"				6'-10"
14							8'-0"
15							8'-7"
16							9'-2"
17							9'-9"
18							10'-4"
19	Orchestra Shell 1	620					10'-10"
20							11'-6"
21							12'-1"
22							12'-8"
23	Border	225		18'H x 63'W			13'-3"
24	Legs	140	2 panels per side- 8'W	36'H x 16'W	In	21' L/R	13'-9"
26	2nd Electric (cir. 195-228)		Maximum Out Trim 40'4"				15'-0"
28							16'-2"
31							17'-11"
33							19'-1"
34	Orchestra Shell 2	640					19'-8"
36							20'-10"
37	Full Stage Black Out	365	5 panels @ 16'W	36'H x 63'W			21'-5"
38	Legs	140	2 panels per side- 8'W	36'H x 16'W	In	21' L/R	22'-0"
41							23'-9"
42	3rd Electric (cir. 229-262)		Maximum Out Trim 40'4"				24'-4"
43	Side Ladder						24'-11"
44							25'-7"
45							26'-2"
46							26'-9"
47							27'-4"
48	Full Stage Black Out	365	5 panels @ 16'W	36'H x 63'W			27'-11"
49	Legs	140	2 panels per side- 8'W	36'H x 16'W	In	21' L/R	28'-6"
50							29'-1"
52							30'-3"
54							31'-5"
55	Legs	140	2 panels per side- 8'W	36'H x 16'W	In	21' L/R	32'-0"
57	4th Electric (cir. 263-296)		Maximum Out Trim 40'4"				33'-2"
59							34'-4"
60							34'-11"
61							35'-6"
63							36'-8"
64	Full Traveller	1,020		36'H x 32'W			37'-3"
65	Legs	140		36'H x 16'W	In	21' L/R	37'-10"
66							38'-5"
67	Side Ladder						39'-0"
68	5th Electric (Far Cys)	545					39'-7"
70							40'-9"
71	Full Traveller	1,020		36'H x 32'W			41'-4"
73							42'-6"
74							43'-1"
75							43'-8"
76	Cyc	120					44'-3"
Indicates fixed pieces			Indicates semi-fixed pieces (movement highly discouraged)				
Battens 63' (19.2m) schedule 40, 1.5" pipe with 6 lift lines			Maximum load is 1500 lb. per set				
High trim on electrics is 43' (13.1m)			Ample weight available (iron)				
High trim on all other battens is 75' (22.8m)			Loading gallery: Stage right, 66' (20.1m) above stage deck				
Low trim on all battens is 3' (0.9m)			Pin Rail: Stage right and left, 30' (9.14m) above stage deck				
Proscenium is 50' wide by 30' High			1 black and 1 white scrim available				

**Please Note:** Line Schedule accurate at the time of publication. It will be adopted to fit current production requirements as needed. Please contact the Technical Director for a copy of the most current Line Schedule in advance of your production.

Appendix B:  
Honeywell Center Ford Theater  
Radio & Wireless Microphone Frequencies in Use  
All In MHz

Wireless Microphones

518-542 (2 channels, selectable)

554-590 (4 channels, selectable)

Wireless Intercom

522.600

632.900

636.900

644.500

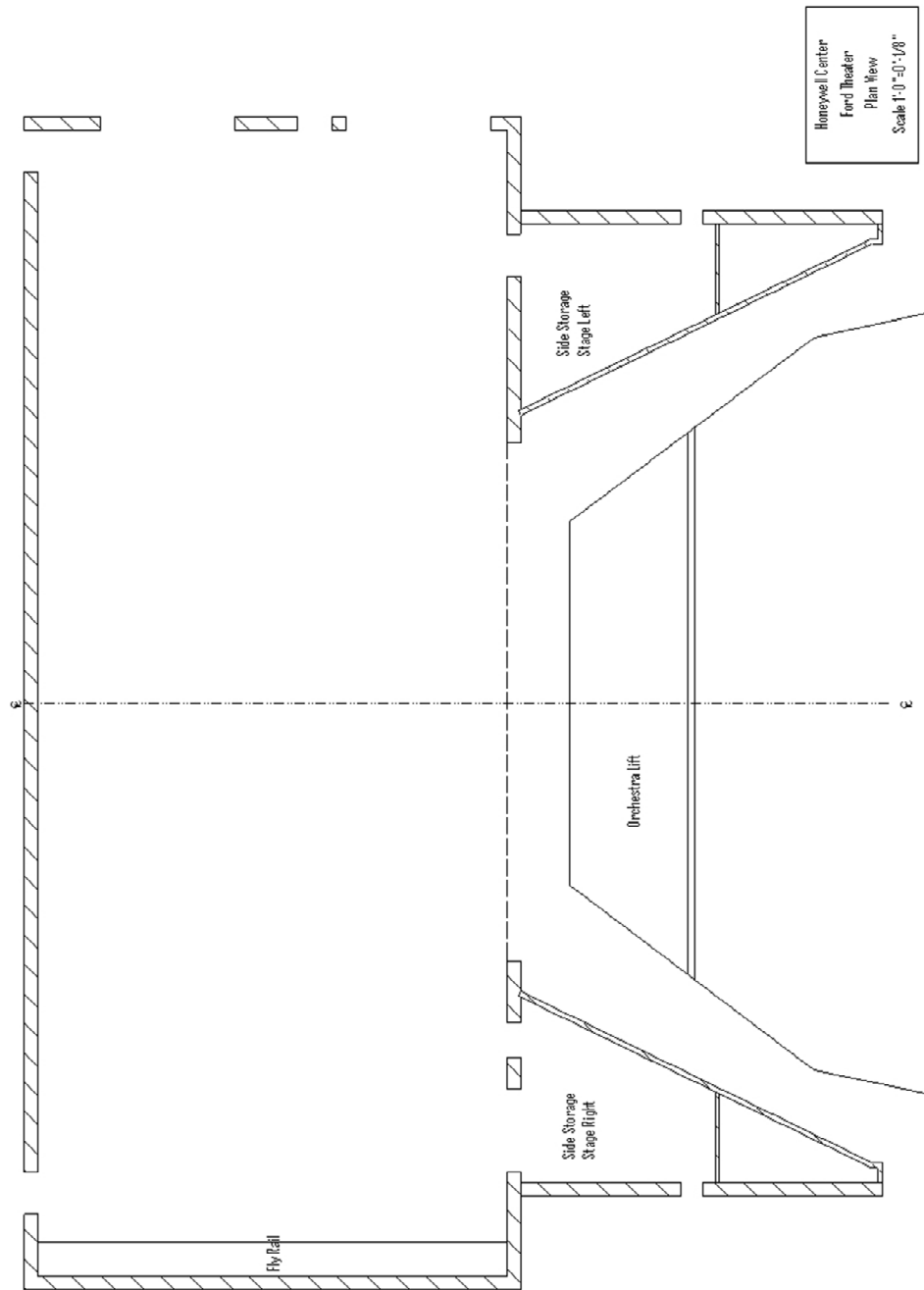
647.500

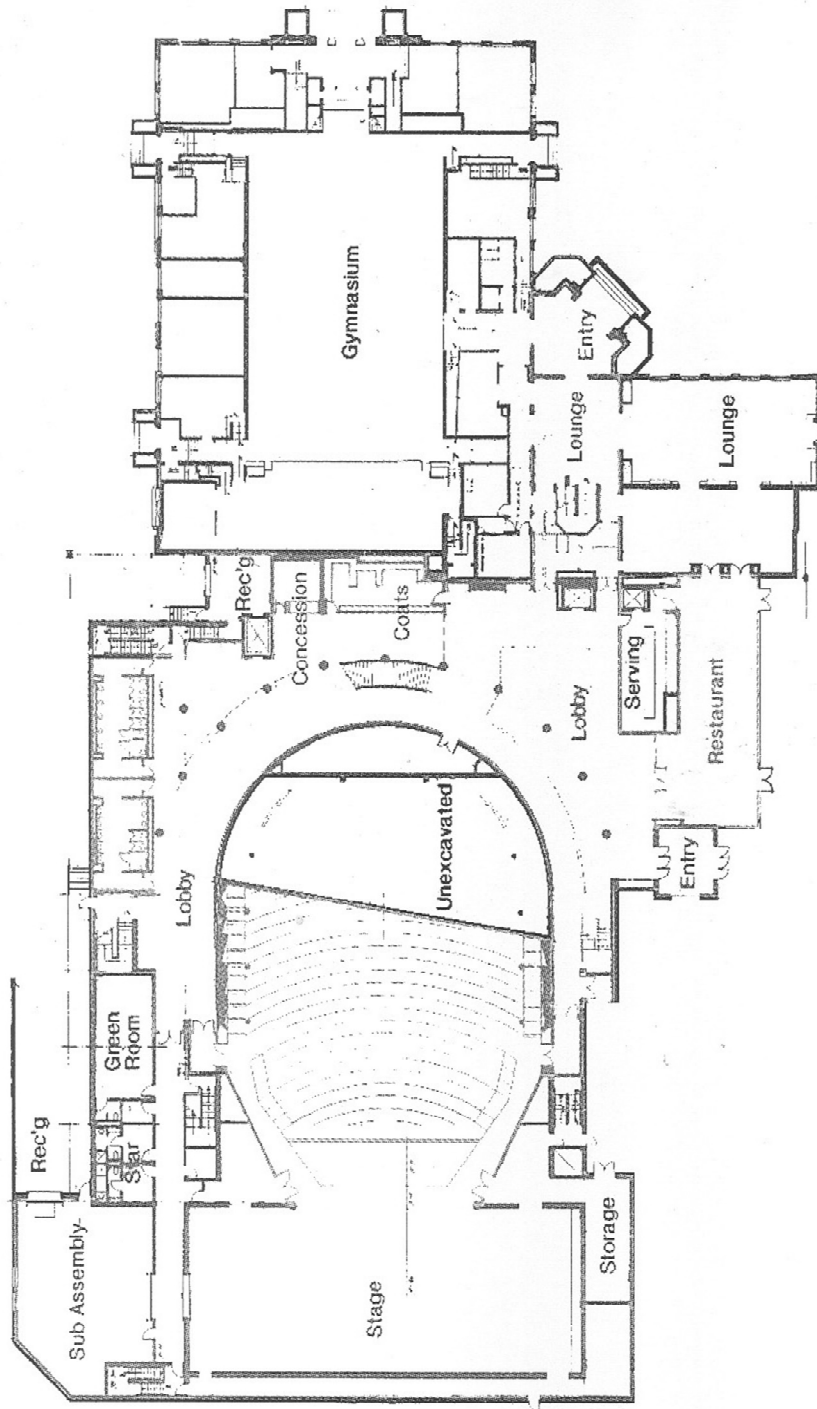
Listen Technologies Hearing Assistance

72.9

Motorola Portable Radios

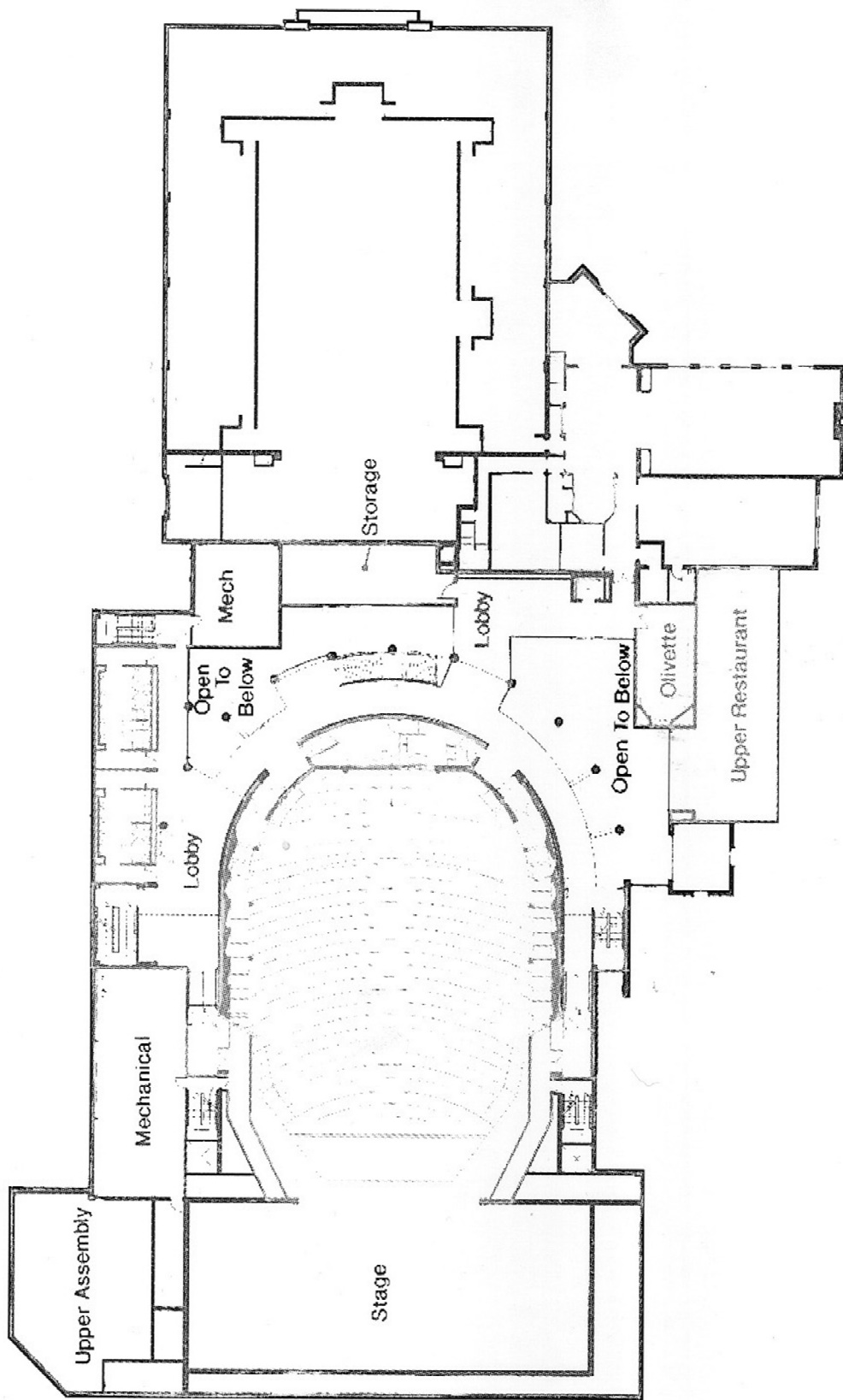
460.725	461.250
462.125	464.275
465.725	466.250





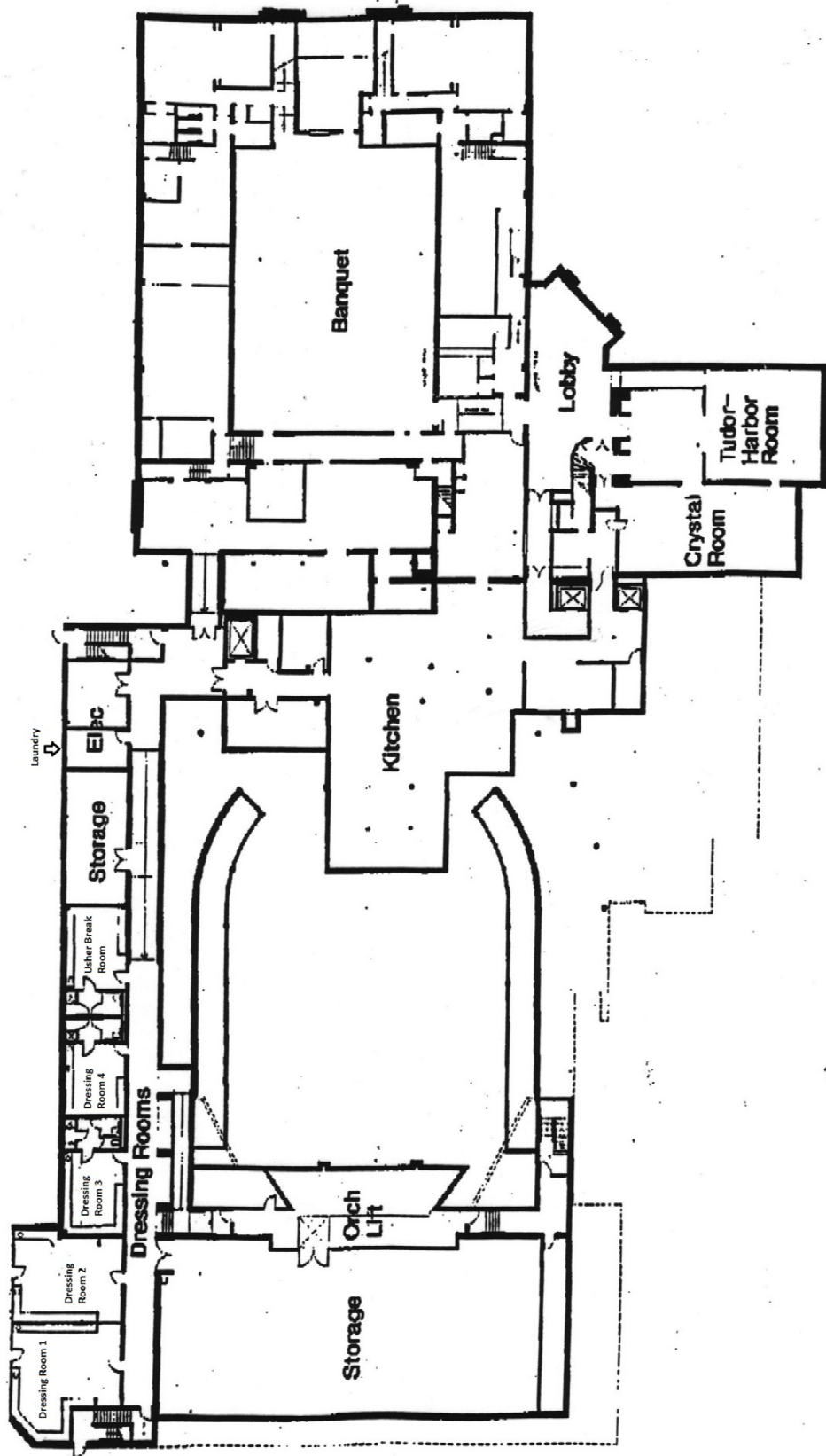
First Floor Plan  
Greiner



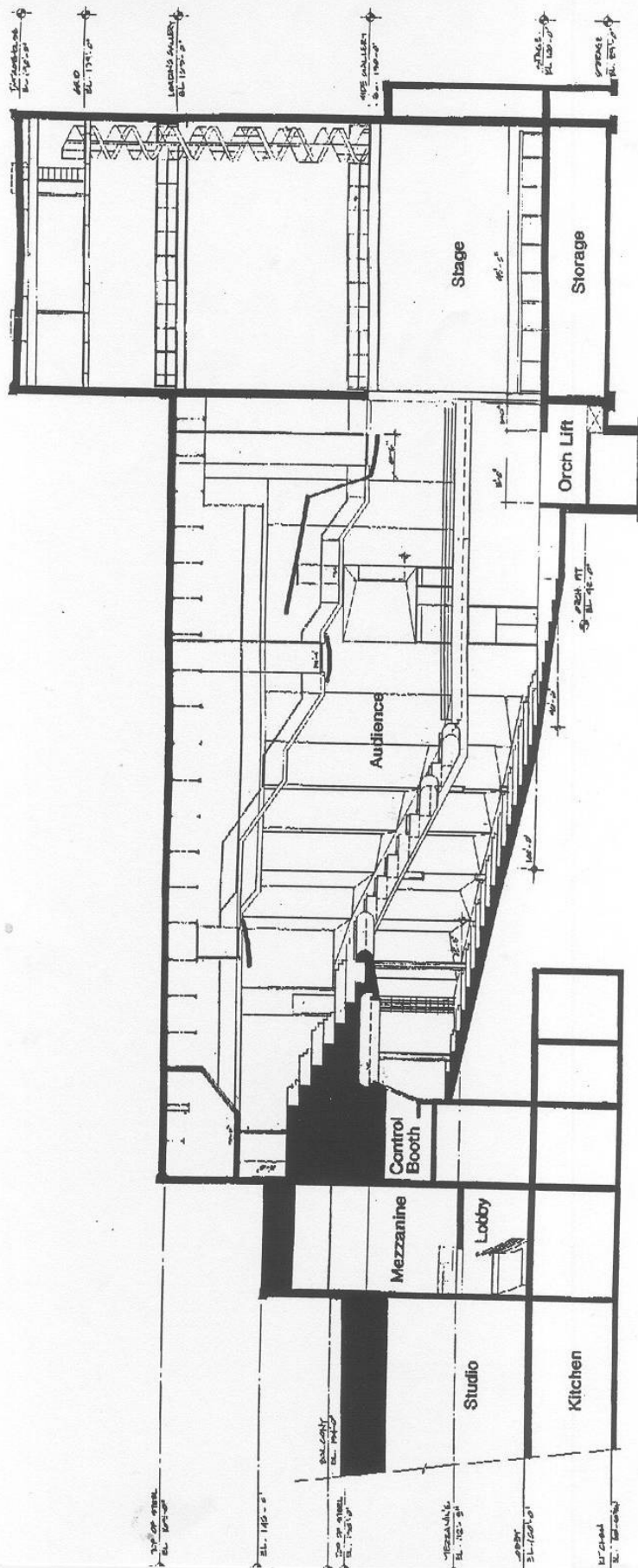


Mezzanine Floor Plan

①  
Greiner



Basement Floor Plan



Section



Greiner



